

# Hampshire Water Transfer and Water Recycling Project

## Environmental Statement – Figure 6.4 Construction Phase Road Traffic Emissions - Ecological Receptors

**VOLUME NUMBER: 6**

**PLANNING INSPECTORATE SCHEME NUMBER: WA010002**

**APPLICATION DOCUMENT REFERENCE: 6.3**

**APFP REGULATION: 5(2)(a)**

May 2026

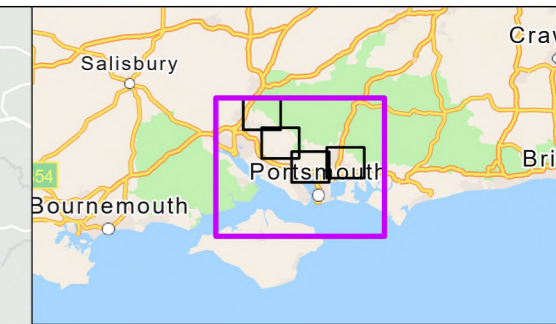
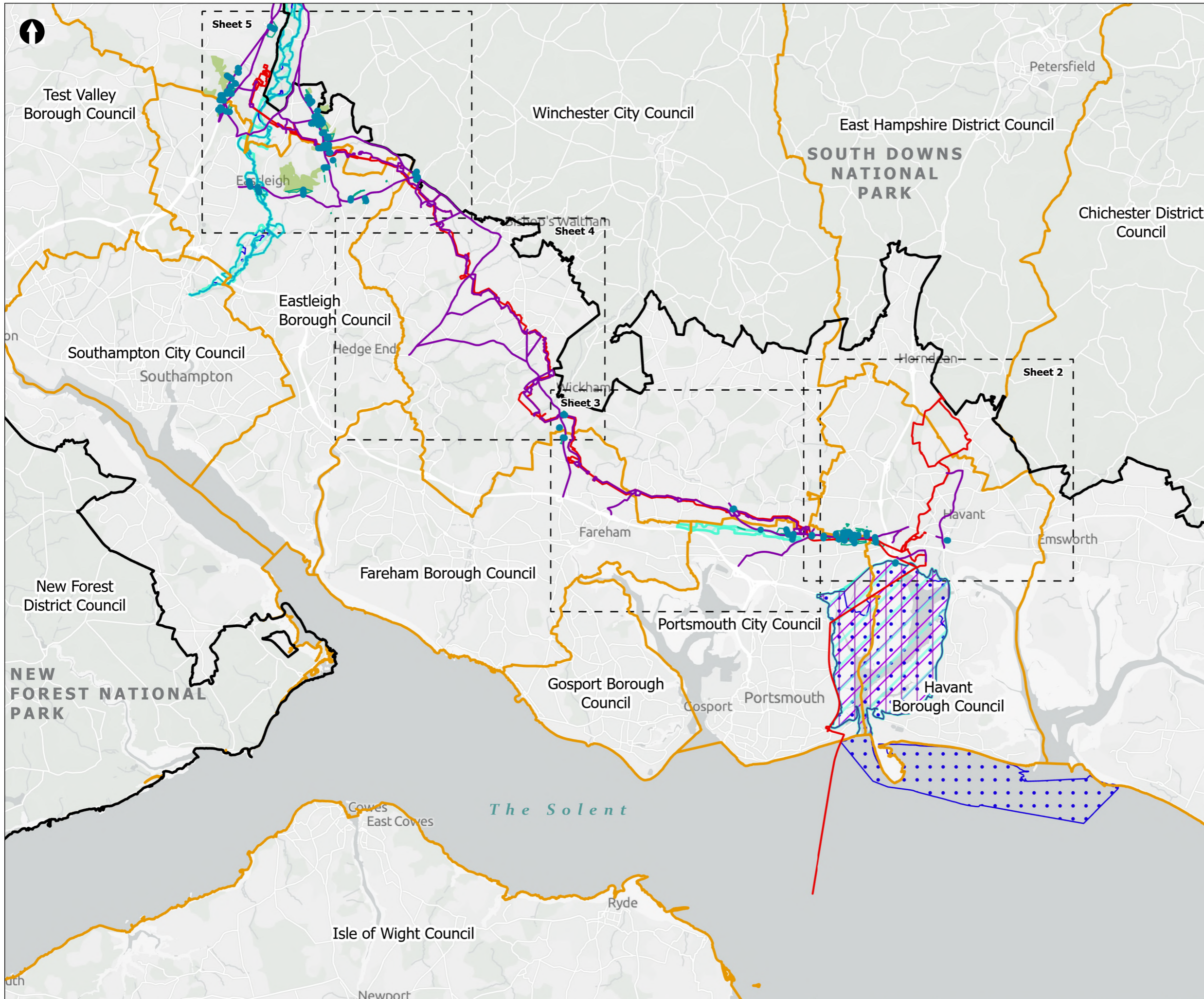
Version 0



from  
**Southern  
Water** 

The Southern Water logo consists of the text 'Southern Water' in a blue, sans-serif font. To the right of the text is a graphic element consisting of three stylized, wavy blue lines of varying lengths, representing water waves. The word 'from' is positioned above 'Southern' in a smaller, lighter blue font.





- Order Limits
- Sheet Extent Boxes 1:30K
- National Parks
- Local planning authorities
- Modelled Ecological Transects
- Modelled Road Network
- Designated Sites**
- Ramsar Sites
- Sites of Importance for Nature Conservation (SINCs)
- Sites of Special Scientific Interest (SSSI)
- Special Areas of Conservation (SAC)
- Special Protection Area (SPA)
- Non-designated Sites**
- Ancient Woodland

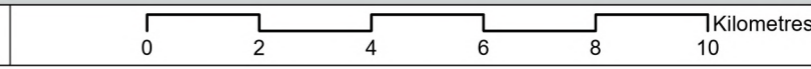
Coordinate system: British National Grid; Datum: OSGB 1936  
 Data sources: © Crown copyright and database rights 2026 Ordnance Survey 0100031673. Sources: Esri, TomTom, Garmin, FAO, NOAA, USGS, © OpenStreetMap contributors, and the GIS User Community, Contains OS data © Crown Copyright and database right 2025. Contains data from OS Zoomstack

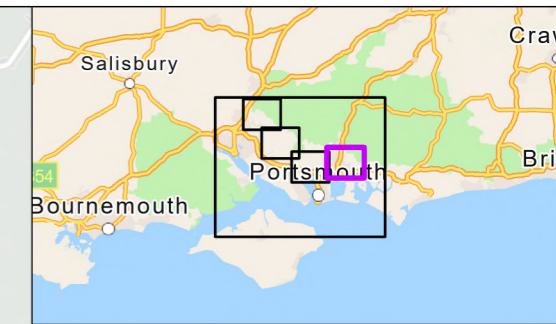
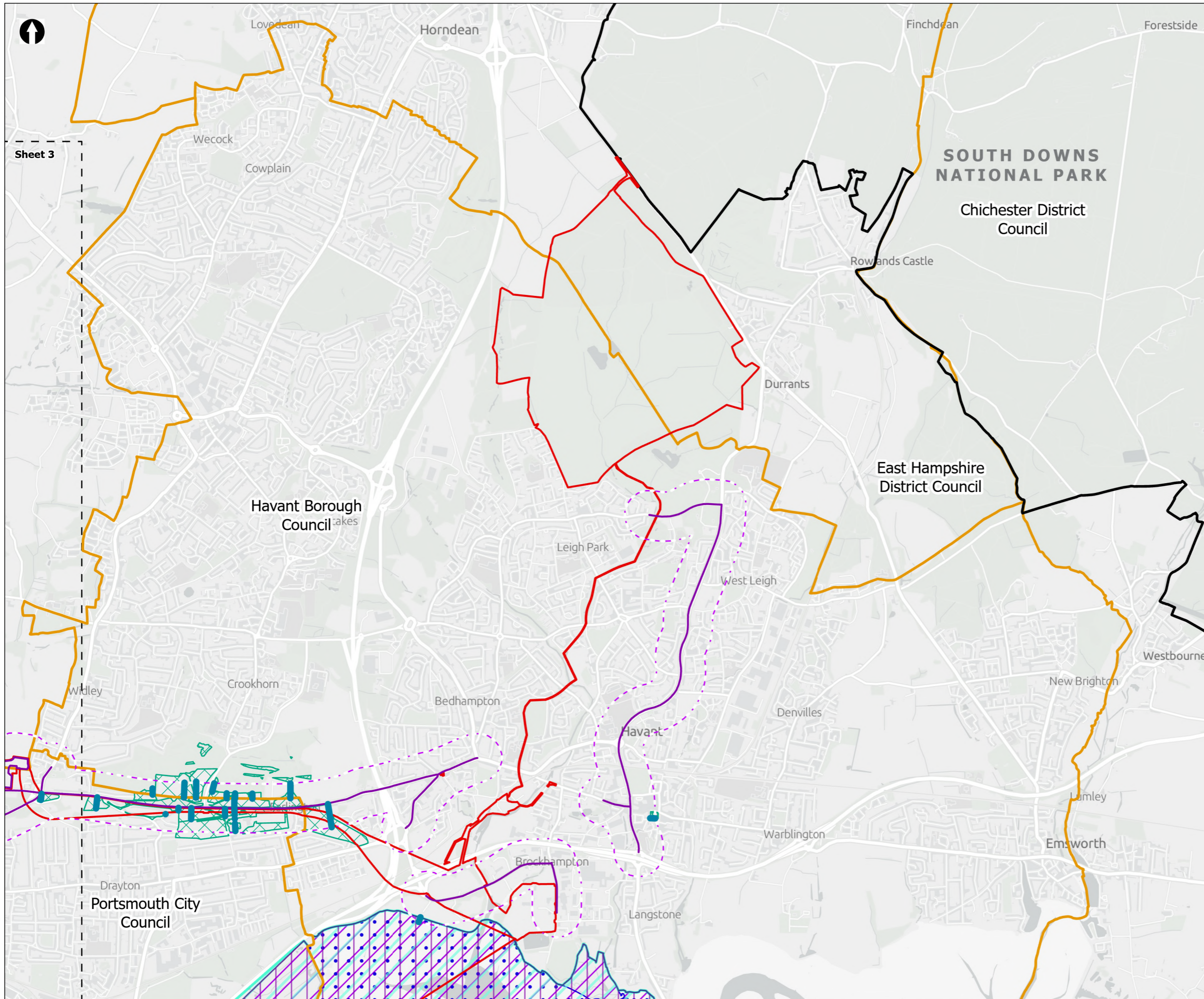
PROJECT TITLE  
 Hampshire Water Transfer and Water Recycling Project



Figure 6.4  
 Construction Phase Road Traffic Emissions – Ecological Receptors  
 Sheet 1 of 5

Drawn <b>DL</b>	GIS Checked <b>MW</b>	Checked <b>MP</b>	Approved <b>AK</b>
Scale at A3 <b>1:135,000</b>	Status <b>Final</b>	Revision <b>05</b>	Security <b>STD</b>





**Order Limits**

- Sheet Extent Boxes 1:30K
- National Parks
- Local planning authorities
- Modelled Ecological Transects
- Modelled Road Network
- Modelled Road 200m Buffer

**Designated Sites**

- Ramsar Sites
- Sites of Importance for Nature Conservation (SINCs)
- Sites of Special Scientific Interest (SSSI)
- Special Areas of Conservation (SAC)
- Special Protection Area (SPA)

Coordinate system: British National Grid; Datum: OSGB 1936  
 Data sources: © Crown copyright and database rights 2026 Ordnance Survey 0100031673. Sources: Esri, TomTom, Garmin, FAO, NOAA, USGS, © OpenStreetMap contributors, and the GIS User Community, Contains OS data © Crown Copyright and database right 2025. Contains data from OS Zoomstack

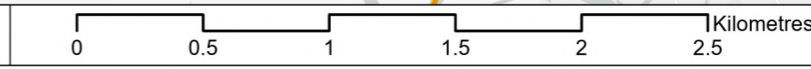
PROJECT TITLE  
 Hampshire Water Transfer and Water Recycling Project



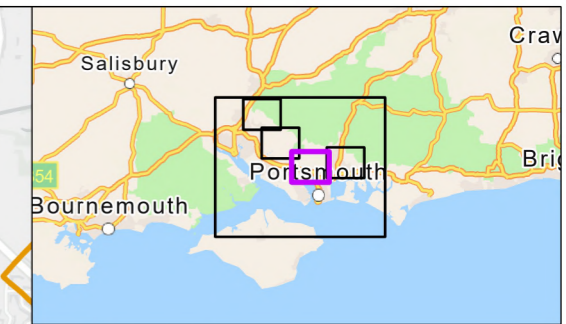
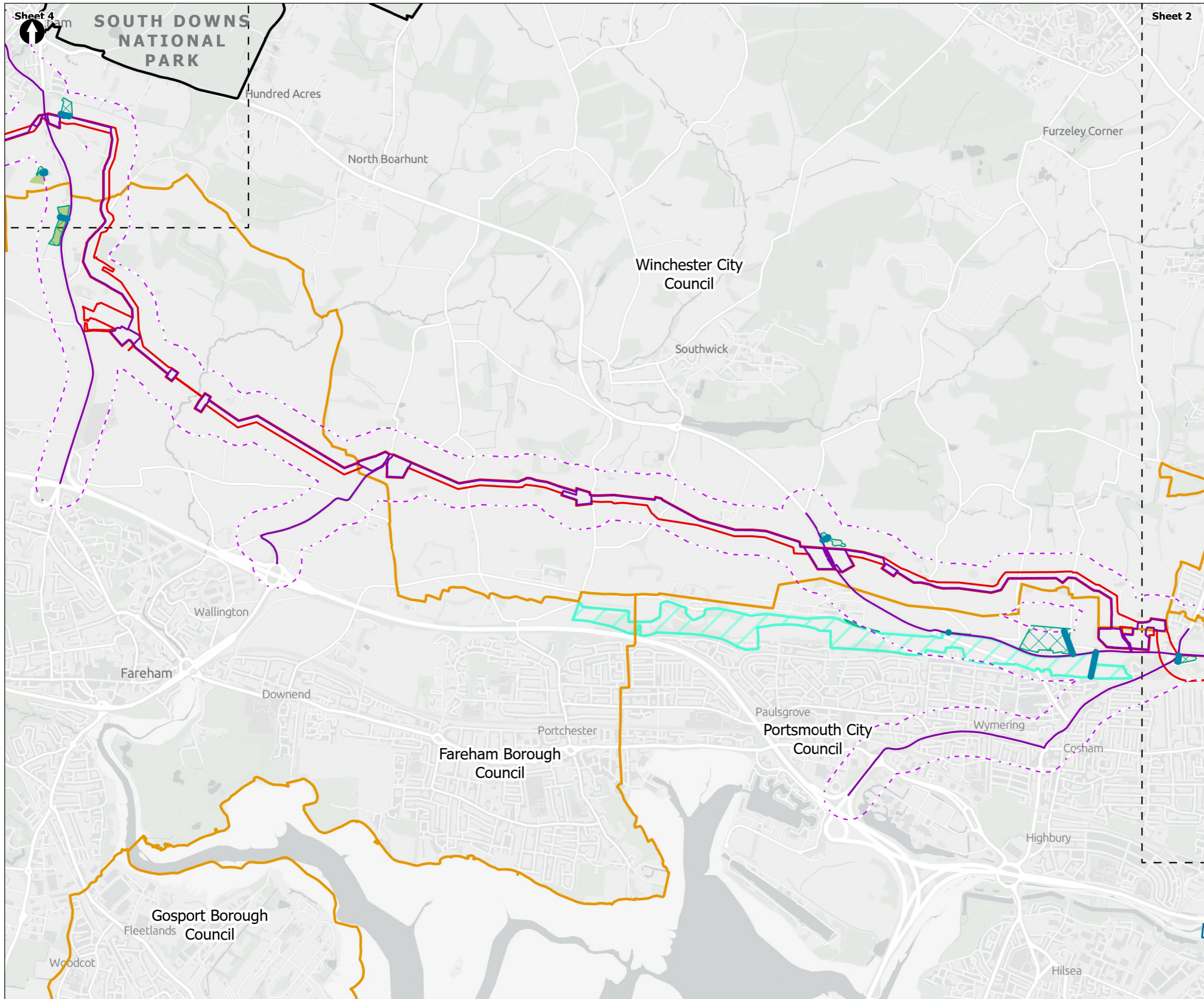
Figure 6.4  
 Construction Phase Road Traffic Emissions – Ecological Receptors  
 Sheet 2 of 5

Drawn <b>DL</b>	GIS Checked <b>MW</b>	Checked <b>MP</b>	Approved <b>AK</b>
Scale at A3 <b>1:30,000</b>	Status <b>Final</b>	Revision <b>05</b>	Security <b>STD</b>

© Southern Water 2026  
 This document is issued for the party which commissioned it and for specific purposes connected with the captioned project only. It should not be relied upon by any other party or used for any other purpose. We accept no responsibility for the consequences of this document being relied upon by any other party, or being used for any other purpose, or containing any error or omission which is due to an error or omission in data supplied to us by other parties.



Drawing Number  
**PC5223-RHD-ES-ZZ-D-Z-0121**



- Order Limits
- Sheet Extent Boxes 1:30K
- National Parks
- Local planning authorities
- Modelled Ecological Transects
- Modelled Road Network
- Modelled Road 200m Buffer
- Designated Sites**
- Ramsar Sites
- Sites of Importance for Nature Conservation (SINCs)
- Sites of Special Scientific Interest (SSSI)
- Special Areas of Conservation (SAC)
- Special Protection Area (SPA)
- Non-designated Sites**
- Ancient Woodland

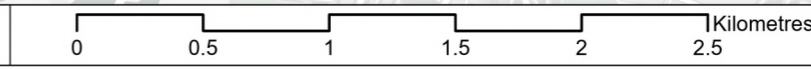
Coordinate system: British National Grid; Datum: OSGB 1936  
 Data sources: © Crown copyright and database rights 2026 Ordnance Survey 0100031673. Sources: Esri, TomTom, Garmin, FAO, NOAA, USGS, © OpenStreetMap contributors, and the GIS User Community, Contains OS data © Crown Copyright and database right 2025. Contains data from OS Zoomstack

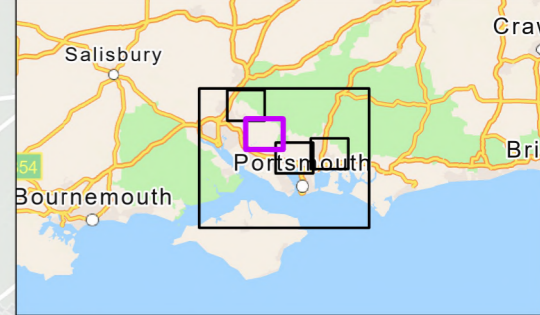
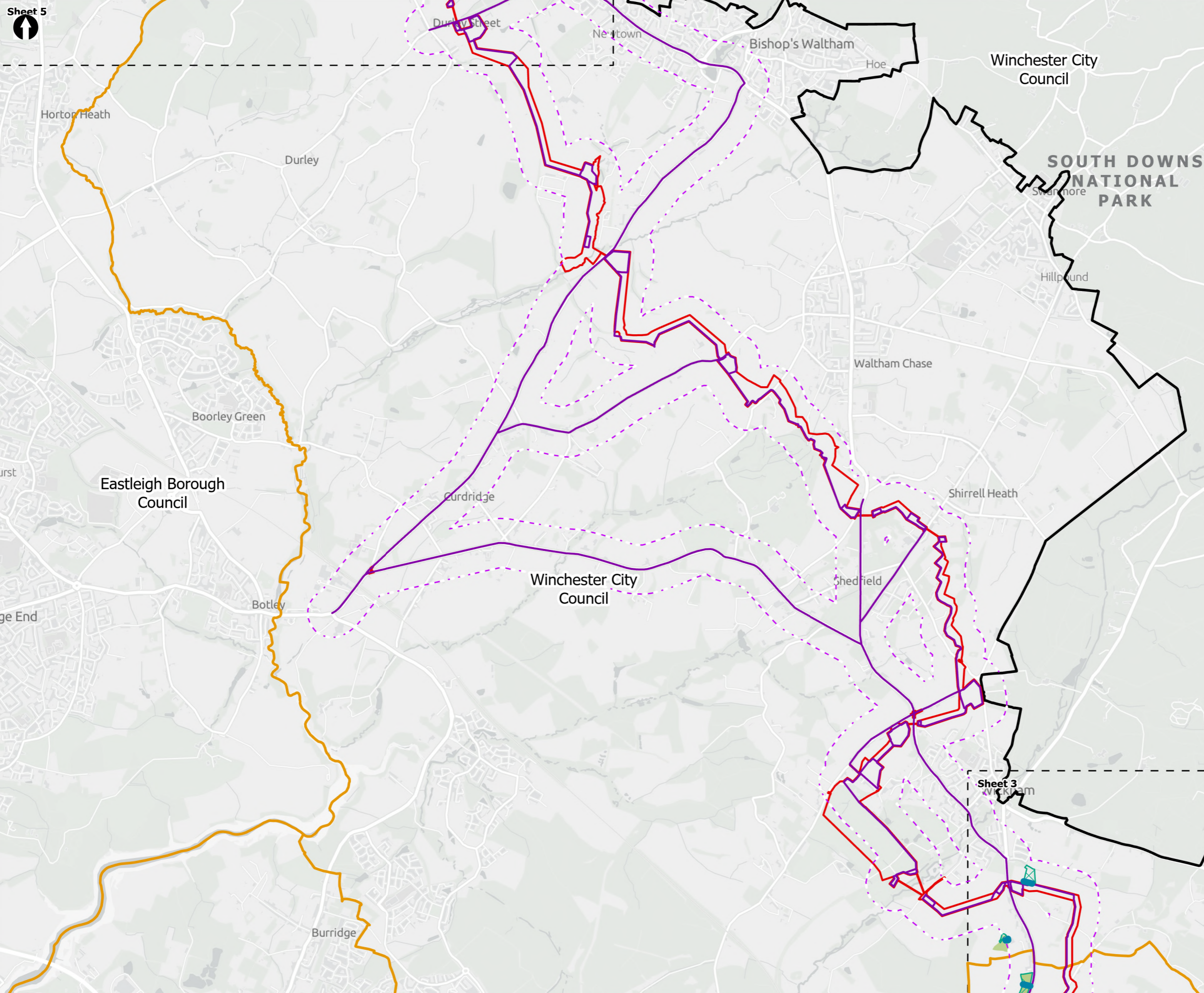
PROJECT TITLE  
 Hampshire Water Transfer and Water Recycling Project



Figure 6.4  
 Construction Phase Road Traffic Emissions – Ecological Receptors  
 Sheet 3 of 5

Drawn <b>DL</b>	GIS Checked <b>MW</b>	Checked <b>MP</b>	Approved <b>AK</b>
Scale at A3 <b>1:30,000</b>	Status <b>Final</b>	Revision <b>05</b>	Security <b>STD</b>





- ▭ Order Limits
- Sheet Extent Boxes 1:30K
- National Parks
- Local planning authorities
- Modelled Ecological Transects
- Modelled Road Network
- - - Modelled Road 200m Buffer
- Designated Sites**
- Sites of Importance for Nature Conservation (SINCs)
- Non-designated Sites**
- Ancient Woodland

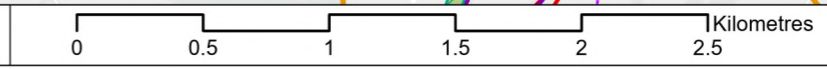
Coordinate system: British National Grid; Datum: OSGB 1936  
 Data sources: © Crown copyright and database rights 2026 Ordnance Survey 0100031673. Sources: Esri, TomTom, Garmin, FAO, NOAA, USGS, © OpenStreetMap contributors, and the GIS User Community, Contains OS data © Crown Copyright and database right 2025. Contains data from OS Zoomstack

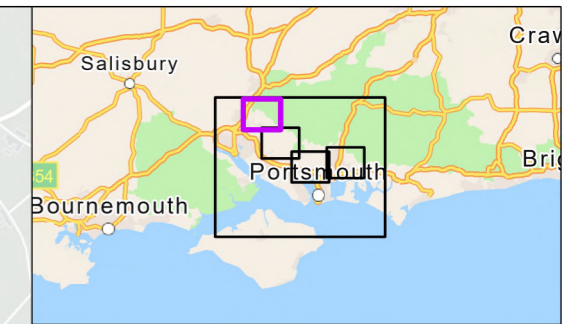
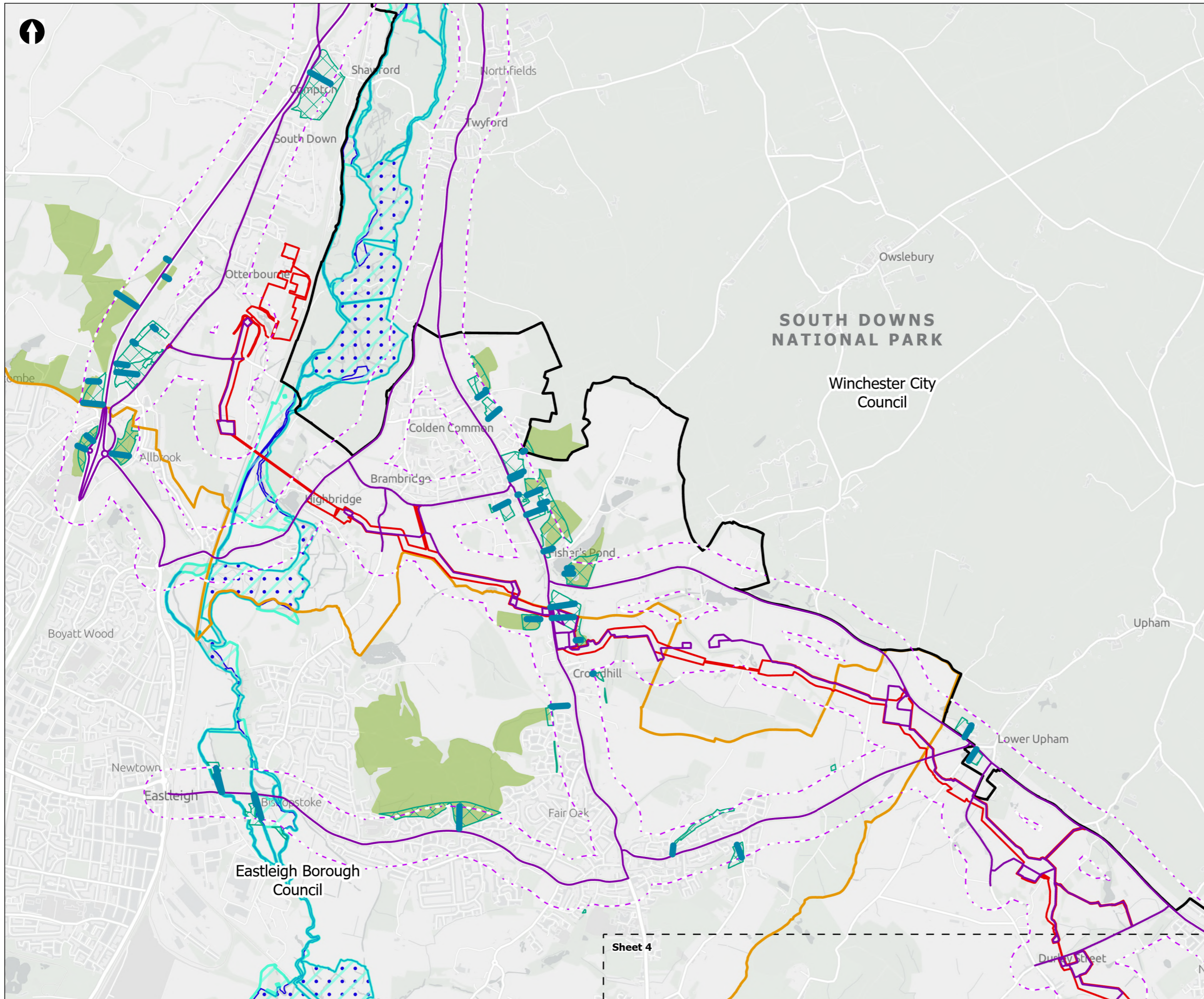
PROJECT TITLE  
 Hampshire Water Transfer and Water Recycling Project



Figure 6.4  
 Construction Phase Road Traffic Emissions – Ecological Receptors  
 Sheet 4 of 5

Drawn <b>DL</b>	GIS Checked <b>MW</b>	Checked <b>MP</b>	Approved <b>AK</b>
Scale at A3 <b>1:30,000</b>	Status <b>Final</b>	Revision <b>05</b>	Security <b>STD</b>





- Order Limits
- Sheet Extent Boxes 1:30K
- National Parks
- Local planning authorities
- Modelled Ecological Transects
- Modelled Road Network
- Modelled Road 200m Buffer
- Designated Sites**
- Sites of Importance for Nature Conservation (SINCs)
- Sites of Special Scientific Interest (SSSI)
- Special Areas of Conservation (SAC)
- Non-designated Sites**
- Ancient Woodland

Coordinate system: British National Grid; Datum: OSGB 1936  
 Data sources: © Crown copyright and database rights 2026 Ordnance Survey 0100031673. Sources: Esri, TomTom, Garmin, FAO, NOAA, USGS, © OpenStreetMap contributors, and the GIS User Community, Contains OS data © Crown Copyright and database right 2025. Contains data from OS Zoomstack

PROJECT TITLE  
 Hampshire Water Transfer and Water Recycling Project



Figure 6.4  
 Construction Phase Road Traffic Emissions – Ecological Receptors  
 Sheet 5 of 5

Drawn <b>DL</b>	GIS Checked <b>MW</b>	Checked <b>MP</b>	Approved <b>AK</b>
Scale at A3 <b>1:30,000</b>	Status <b>Final</b>	Revision <b>05</b>	Security <b>STD</b>

